



# MONTHLY MEMBERSHIP PROGRESS REPORT

District 2 S5

Results as of: 04/30/2018

GMT: JOE AL PICONE

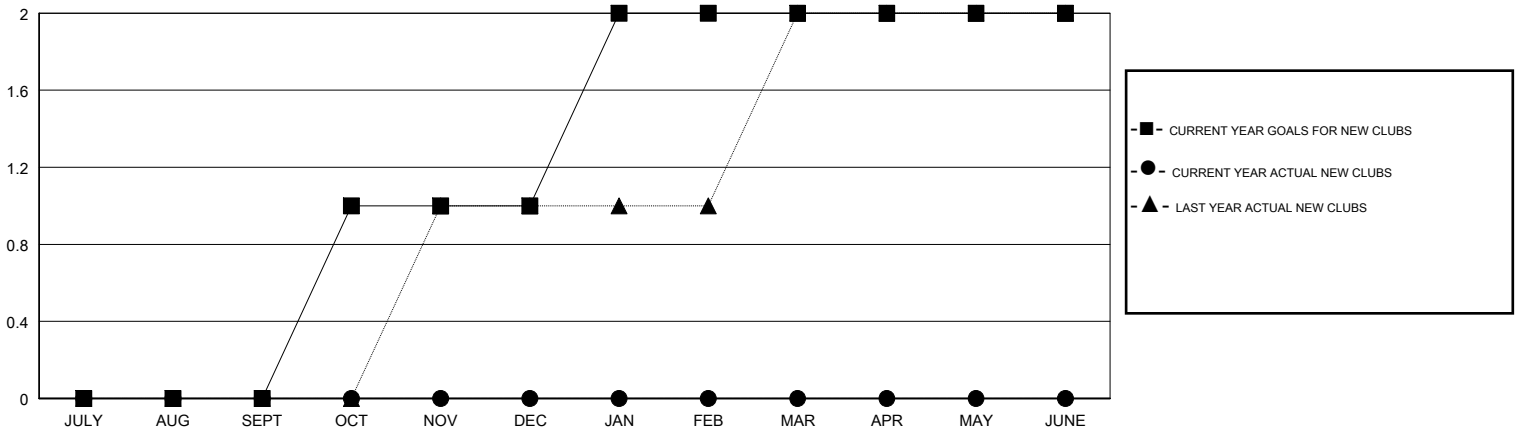
LOCATION TEXAS

GMT CA

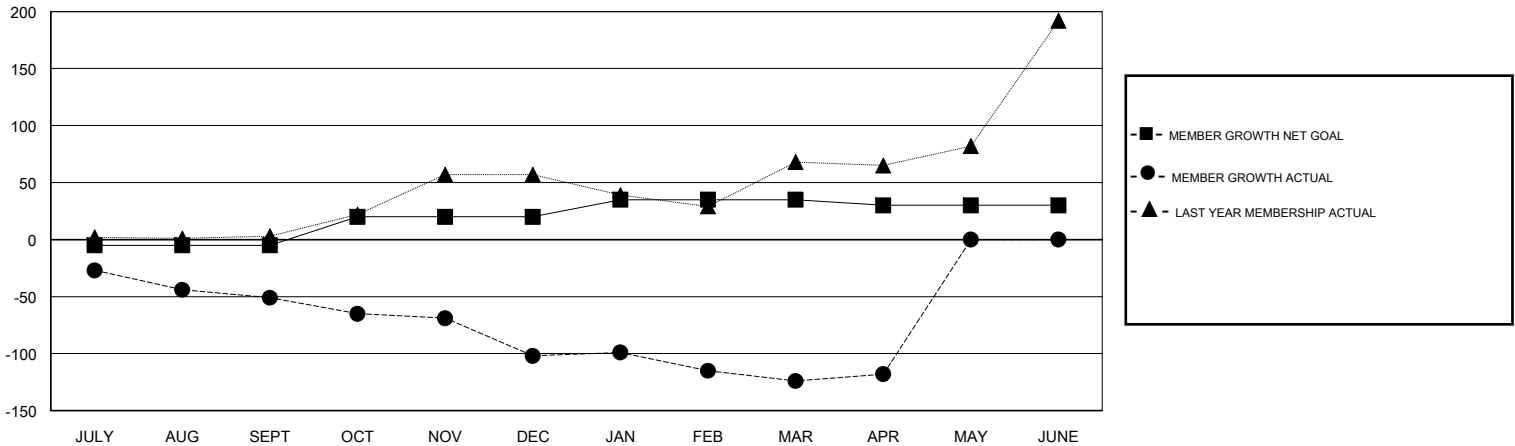
Clubs			
RESULTS FOR 2017-2018			
QUARTER	NEW CLUB GOAL	NEW CLUBS	DROPPED CLUBS
JULY/AUG/SEPT	0	0	0
OCT/NOV/DEC	1	0	1
JAN/FEB/MAR	1	0	0
APR/MAY/JUNE	0	0	0

Members			
RESULTS FOR 2017-2018			
QUARTER	MEMBER GROWTH NET GOAL	MEMBER GROWTH ACTUAL	DROPPED MEMBERS ACTUAL (including transfers)
JULY/AUG/SEPT	-5	43	90
OCT/NOV/DEC	25	65	112
JAN/FEB/MAR	15	77	95
APR/MAY/JUNE	-5	30	22

GOALS AND ACTUAL NEW CLUBS CUMULATIVE



GOALS AND ACTUAL MEMBERS CUMULATIVE



DROPPED CLUBS: 1	42 CLUBS OF 61 ADDED 1 OR MORE NEW MEMBERS	<u>GENDER DISTRIBUTION</u> MALE 1,499 (63.33%) FEMALE 868 (36.67%) Women Percentage Fiscal Year Goal: 20%
<u>DROPPED MEMBERS</u> DECEASED 25 CLUB CANCELLED 15 OTHER 279 TOTAL 319	<a href="#">CLICK HERE FOR CUMULATIVE MEMBERSHIP DATA</a>	TOTAL FAMILY UNIT MEMBERS 388 FAMILY MEMBERS PAYING HALF DUES 196